

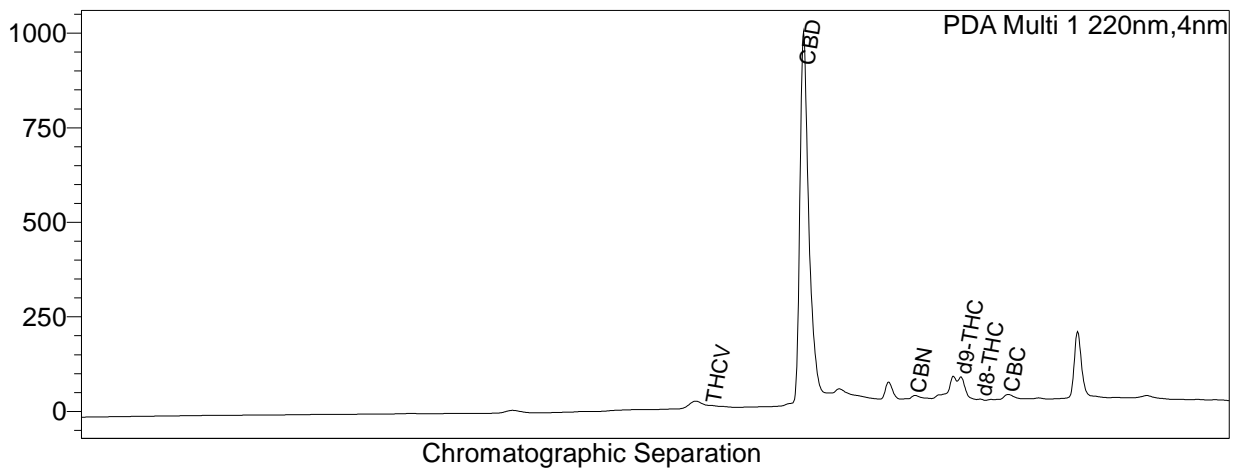


<Sample Information>

System Administrator
 Sample Name : South Mtn Microfarm - CBD Vegetable Glycerine Tincture
 Sample ID : 0114-113
 Data Filename : 210107_1142021_003.lcd
 Method Filename : Shim QC Concentrate Biomass MD Cert -200902 Mod.lcm
 Batch Filename : 210107.lcb
 Vial # : 1-13 Sample Type : Unknown
 Injection Volume : 10 uL
 Sample Amount : 1 mg
 Extraction Vol. : mL
 Dilution Factor :
 Date Acquired : 1/14/2021 10:01:58 AM Acquired by : System Administrator
 Date Processed : 1/14/2021 10:19:01 AM Processed by : System Administrator

<Chromatogram>

mAU



<Quantitative Results>

PDA				
ID#	Name	Dry weight %	Conc.	Unit
1	CBDV	0.00	--	mg/g
2	THCV	0.00	0.000	mg/g
3	CBD	4.90	49.037	mg/g
4	CBG	0.00	--	mg/g
5	CBDA	0.00	--	mg/g
6	CBGA	0.00	--	mg/g
7	CBN	0.04	0.380	mg/g
8	d9-THC	0.27	2.741	mg/g
9	d8-THC	0.01	0.116	mg/g
10	CBC	0.04	0.354	mg/g
11	THCA-A	0.00	--	mg/g

Total THC	0.27%
Total CBD	4.90%
Moisture Content	%

CBD per 30mL bottle:
1470mg

Signed:
Barry F. Pritchard

