

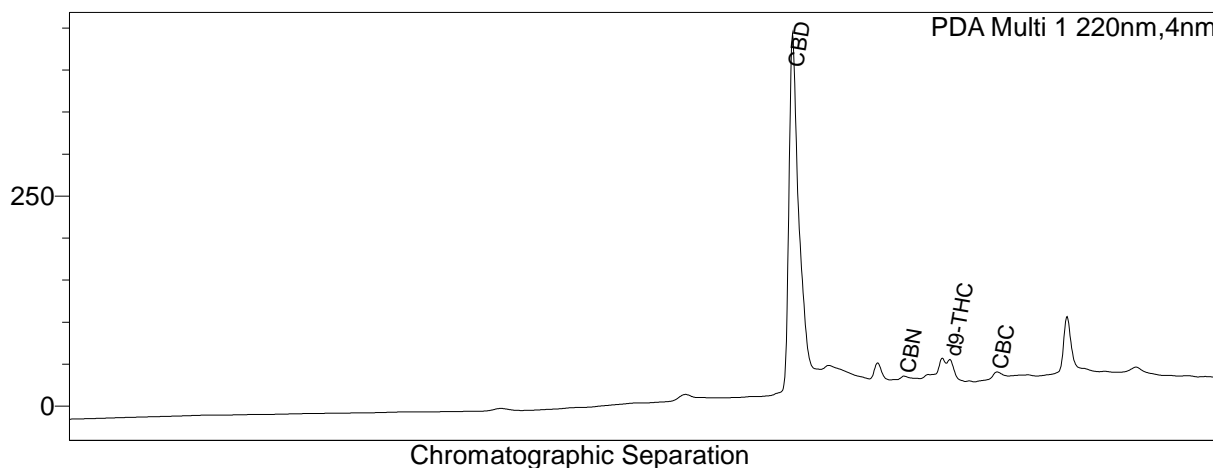


## <Sample Information>

System Administrator  
 Sample Name : South Mtn Microfarm - CBD Hemp based Tincture  
 Sample ID : 0114-112  
 Data Filename : 210107\_1142021\_002.lcd  
 Method Filename : Shim QC Concentrate Biomass MD Cert -200902 Mod.lcm  
 Batch Filename : 210107.lcb  
 Vial # : 1-12 Sample Type : Unknown  
 Injection Volume : 10 uL  
 Sample Amount : 1 mg  
 Extraction Vol. : mL  
 Dilution Factor :  
 Date Acquired : 1/14/2021 9:44:14 AM Acquired by : System Administrator  
 Date Processed : 1/14/2021 10:01:16 AM Processed by : System Administrator

## <Chromatogram>

mAU



## <Quantitative Results>

PDA				
ID#	Name	Dry weight %	Conc.	Unit
1	CBDV	0.00	--	mg/g
2	THCV	0.00	--	mg/g
3	CBD	4.63	46.276	mg/g
4	CBG	0.00	--	mg/g
5	CBDA	0.00	--	mg/g
6	CBGA	0.00	--	mg/g
7	CBN	0.02	0.165	mg/g
8	d9-THC	0.27	2.710	mg/g
9	d8-THC	0.00	--	mg/g
10	CBC	0.04	0.351	mg/g
11	THCA-A	0.00	--	mg/g

Total THC	0.27%
Total CBD	4.63%
Moisture Content	%

CBD per 30 mL bottle:  
1389mg

Signed:  
Barry F. Pritchard

